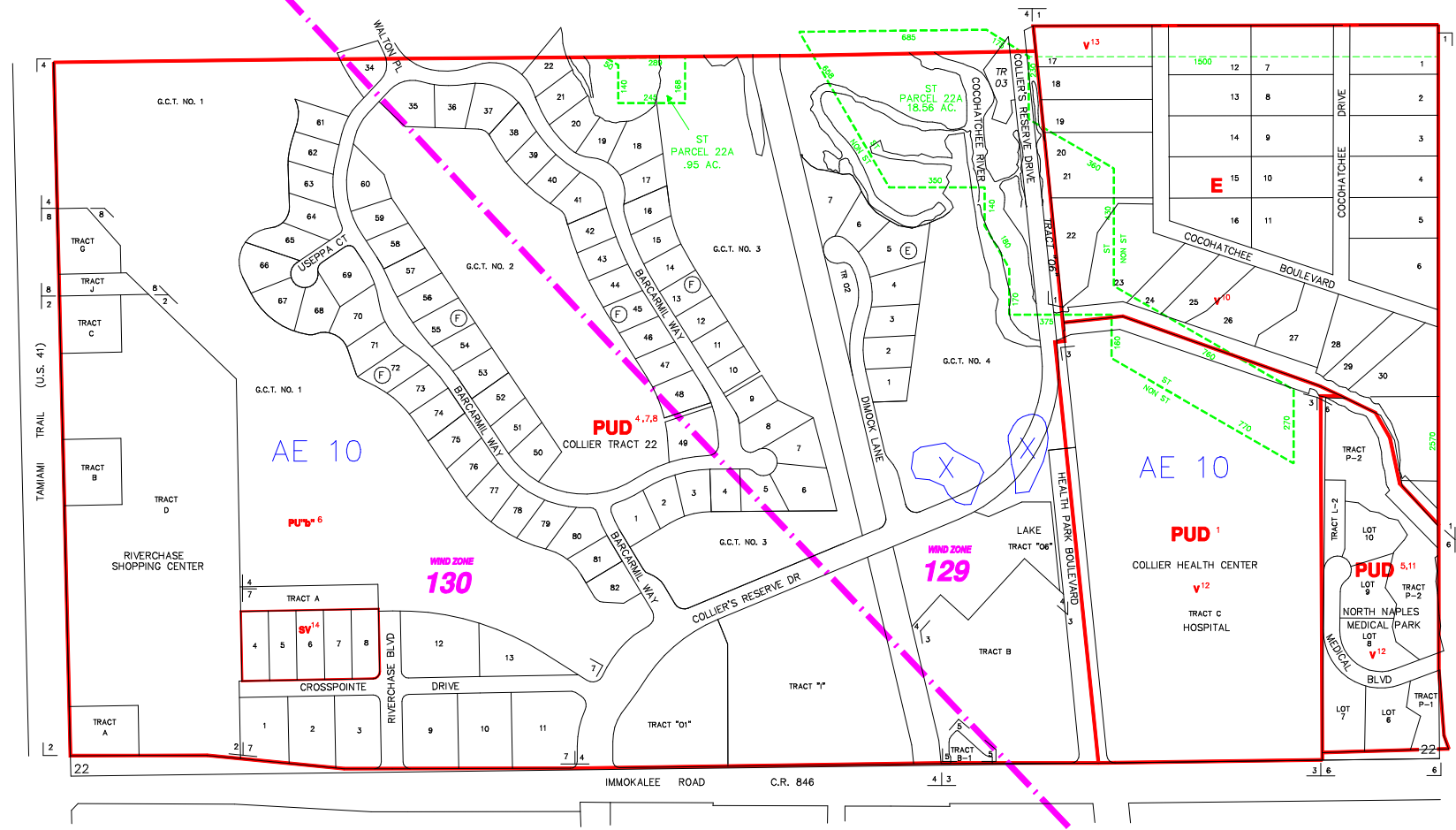


The Historic/Archaeological Probability Maps are the official County source designating historic or archaeological resources.

LAST REVISION: ZONING _____ OTHER _____

8522N



--- INDICATES SPECIAL TREATMENT OVERLAY
 - - - - - INDICATES WIND ZONE BOUNDARY LINE

SUBDIVISION INDEX			
NO.	NAME	P.B.	Pg.
1	COCOHATCHEE RIVER ESTATES		11
2	RIVERCHASE SHOPPING CENTER	18	19-20
3	COLLIER HEALTH PARK	17	50-51
4	COLLIER RESERVE	20	59-87
5	PLAT OF TRACT "B"-1	26	42-43
6	NORTH NAPLES MEDICAL PARK	26	46-47
7	RIVERCHASE COMMONS	32	20-21
8	RIVERCHASE SHOPPING CENTER FIRST ADDITION	32	36-37
9			18
10			19
11	UNRECORDED		11
12			12
13			13
14			14
15			15
16			16
17			17
18			18
19			19
20			20

ZONING NOTES
 1 R-87-41C
 2 R-88-21C
 3 R-88-21C
 4 R-88-21C
 5 R-88-21C
 6 R-88-21C
 7 R-88-21C
 8 R-88-21C
 9 R-88-21C
 10 R-88-21C
 11 R-88-21C
 12 R-88-21C
 13 R-88-21C
 14 R-88-21C
 15 R-88-21C
 16 R-88-21C
 17 R-88-21C
 18 R-88-21C
 19 R-88-21C
 20 R-88-21C

THIS IS TO CERTIFY THAT THIS IS A PAGE OF THE OFFICIAL ZONING ATLAS REFERRED TO AND ADOPTED BY REFERENCE BY ORDINANCE NO. 04-41 OF THE COUNTY OF COLLIER, FLORIDA, ADOPTED JUNE 22, 2004.

BY _____ CHAIRMAN
 ATTEST _____ CLERK

FLOOD INSURANCE RATE MAP INFORMATION
 COMMUNITY NUMBER: 120067 PANEL NUMBER: 193G
 PROGRAM: REGULAR EFFECTIVE DATE: NOV. 17, 2005
 FLOOD ZONE: ALL _____ OR AS SHOWN ON MAP.
 WIND ZONE: ALL _____ OR AS SHOWN ON MAP.

COLLIER COUNTY, FLORIDA
 COMMUNITY DEVELOPMENT DIVISION
 TWP 48S RNG 25E SEC(S) 22 S 1/2
 SCALE 0 400
 MAP NUMBER: 8522S

8521S

8523S

8527N