

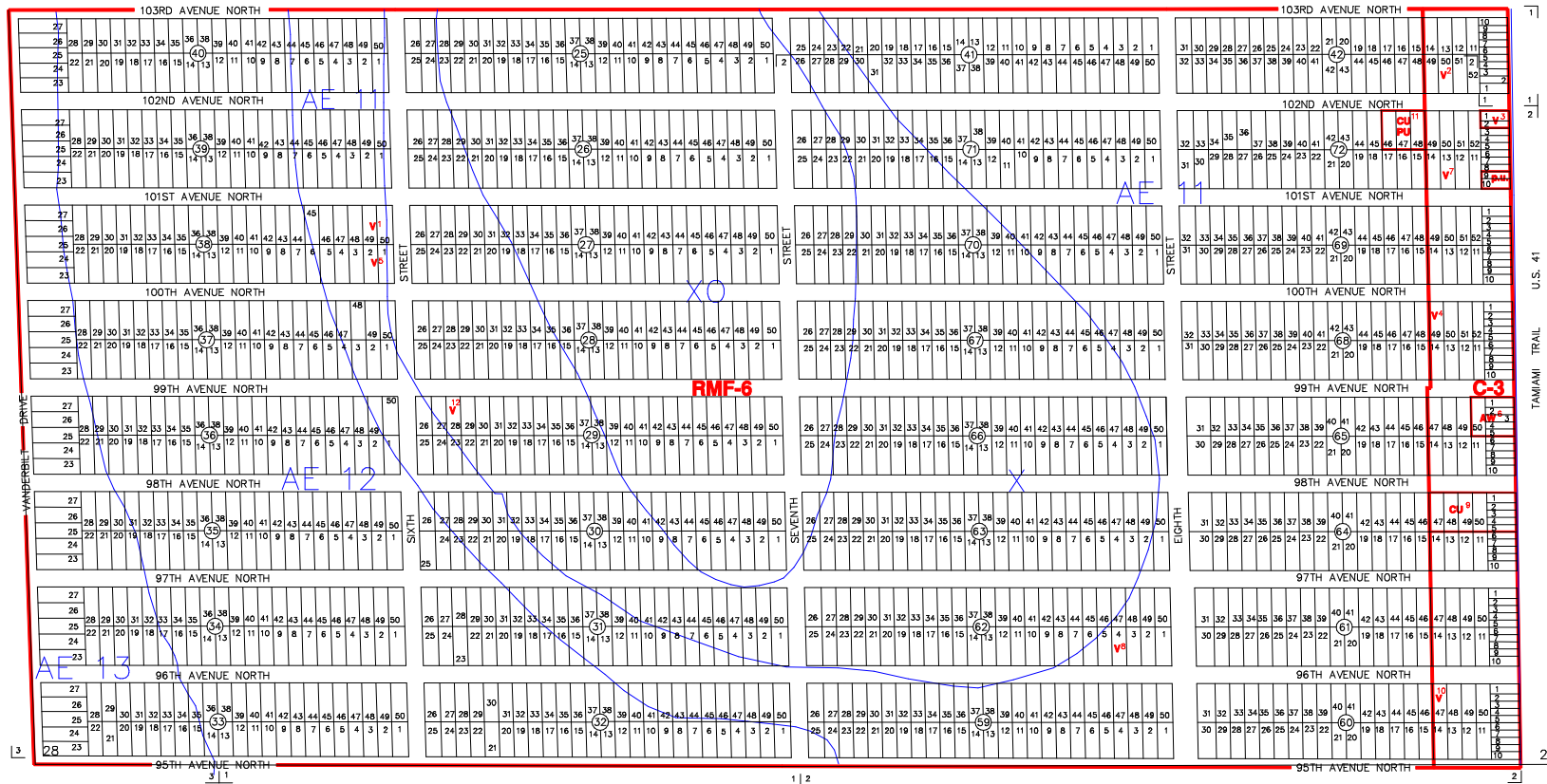
The Historic/Archaeological Probability Maps are the official County source designating historic or archaeological resources.

LAST REVISION: ZONING _____ OTHER _____

8528N

13

311



8533N

SUBDIVISION INDEX							
NO.	NAME	P.B.	Pg.	NO.	NAME	P.B.	Pg.
1	NAPLES PARK #3	S	11	11			
2	NAPLES PARK #5	S	14	12			
3	NAPLES PARK #6	S	15	13			
4				14			
5				15			
6				16			
7				17			
8				18			
9				19			
10				20			

ZONING NOTES
 1 V-28-10
 2 V-88-10
 3 V-88-10
 4 V-88-10
 5 V-88-10
 6 V-88-10
 7 V-88-10
 8 V-88-10
 9 V-88-10
 10 V-88-10
 11 V-88-10
 12 V-88-10
 13 V-88-10
 14 V-88-10
 15 V-88-10
 16 V-88-10
 17 V-88-10
 18 V-88-10
 19 V-88-10
 20 V-88-10

THIS IS TO CERTIFY THAT THIS IS A PAGE OF THE OFFICIAL ZONING ATLAS REFERRED TO AND ADOPTED BY RESOLUTION NO. 04-41 OF THE COUNTY OF COLLIER, FLORIDA, ADOPTED JUNE 22, 2004.

BY _____ CHAIRMAN
 ATTEST _____ CLERK

FLOOD INSURANCE RATE MAP INFORMATION	
COMMUNITY NUMBER: 120067	PANEL NUMBER: 189G,193G
PROGRAM: REGULAR EFFECTIVE DATE: NOV. 17, 2005	FLOOD ZONE: ALL _____ OR AS SHOWN ON MAP.
WIND ZONE: ALL _____ 130 _____ OR AS SHOWN ON MAP.	
COLLIER COUNTY, FLORIDA	
COMMUNITY DEVELOPMENT DIVISION	
TWP 48S RING 25E SEC(S) 28 SO 1/2	
SCALE	MAP NUMBER: 8528S