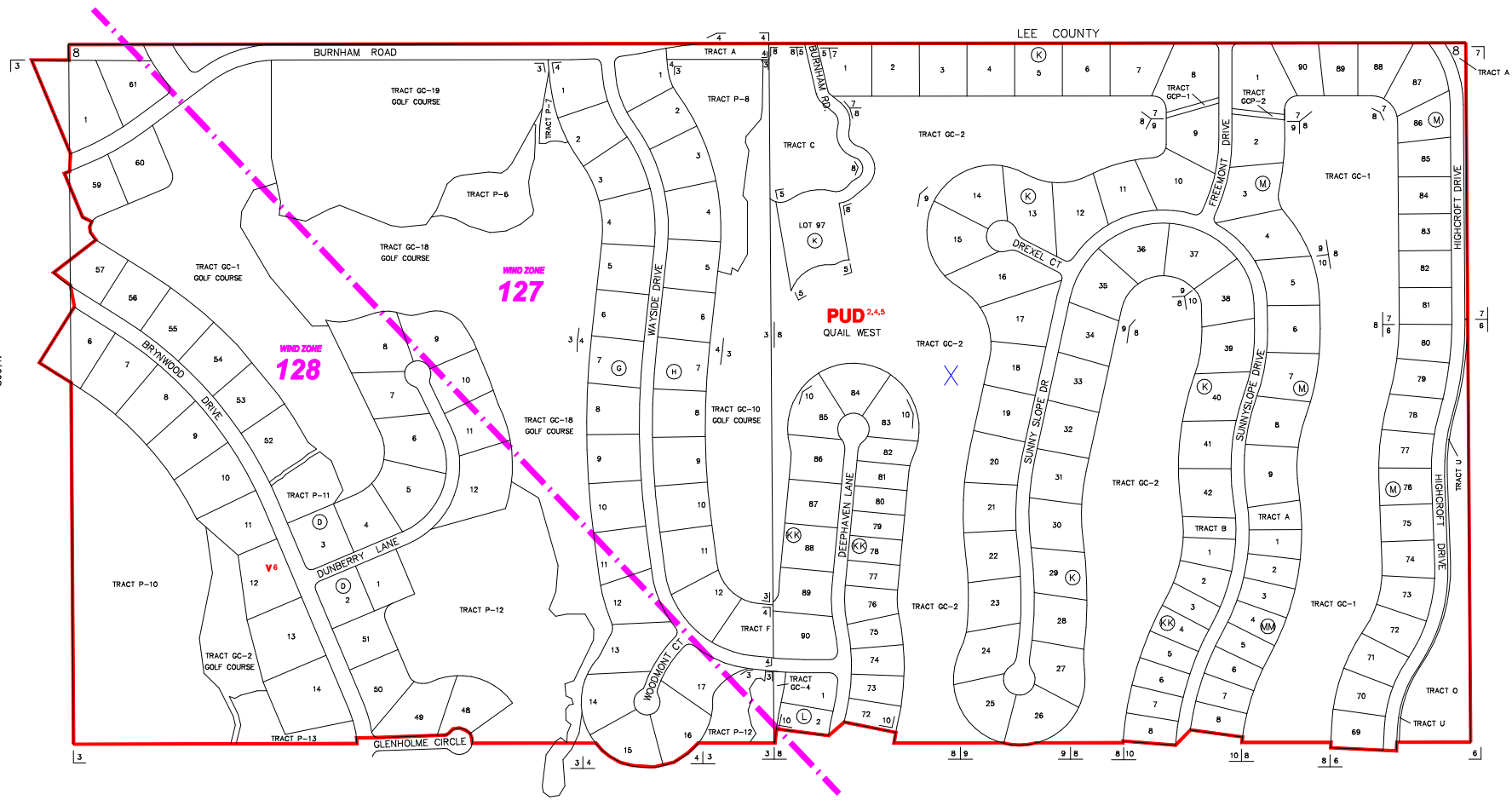


The Historic/Archaeological Probability Maps are the official County source designating historic or archaeological resources.

LAST REVISION: ZONING _____ OTHER _____



--- INDICATES WIND ZONE BOUNDARY LINE

SUBDIVISION INDEX							
NO.	NAME	P.B.	Pg.	NO.	NAME	P.B.	Pg.
1	QUAIL WEST UNIT ONE, REPLAT		11	12			
2	QUAIL WEST UNIT ONE, REPLAT OF TRACT F-2	232	84-106	13			
3	QUAIL WEST PHASE III, BLOCK K, LOT 97	26	36-37	14			
4	QUAIL WEST PHASE III, UNIT THREE	37	41-45	15			
5	QUAIL WEST PHASE III, UNIT FOUR	37	73-76	16			
6	QUAIL WEST PHASE III, UNIT FIVE	39	34-47	17			
7	QUAIL WEST PHASE III, UNIT SIX	40	6-11	18			
8	QUAIL WEST PHASE III, UNIT SEVEN	46	89-102	19			
9				20			
10							

ZONING NOTES
 1 15-16-90 R-89-1 90-56
 2 DC-91
 3 1-2-93 PUD-88-373 84-15
 4 1-2-93 PUD-88-373 84-15
 5 1-2-93 PUD-88-373 84-15
 6 1-2-93 PUD-88-373 84-15
 7 1-2-93 PUD-88-373 84-15
 8 1-2-93 PUD-88-373 84-15
 9 1-2-93 PUD-88-373 84-15
 10 1-2-93 PUD-88-373 84-15

8608S

THIS IS TO CERTIFY THAT THIS IS A PAGE OF THE OFFICIAL ZONING ATLAS REFERRED TO AND ADOPTED BY REFERENCE BY ORDINANCE NO. 04-41 OF THE COUNTY OF COLLIER, FLORIDA, ADOPTED JUNE 22, 2004.

BY _____ CHAIRMAN

ATTEST _____ CLERK

FLOOD INSURANCE RATE MAP INFORMATION
 COMMUNITY NUMBER: 120067 PANEL NUMBER: 215G,225G
 PROGRAM: REGULAR EFFECTIVE DATE: NOV. 17, 2005
 FLOOD ZONE: ALL ___ OR AS SHOWN ON MAP.
 WIND ZONE: ALL ___ OR AS SHOWN ON MAP.

COLLIER COUNTY, FLORIDA
 COMMUNITY DEVELOPMENT DIVISION
 TWP 48S RING 26E SEC(S) 08 NO 1/2
 SCALE 0 400
 MAP NUMBER: 8608N

8607N

8609N

LEE COUNTY