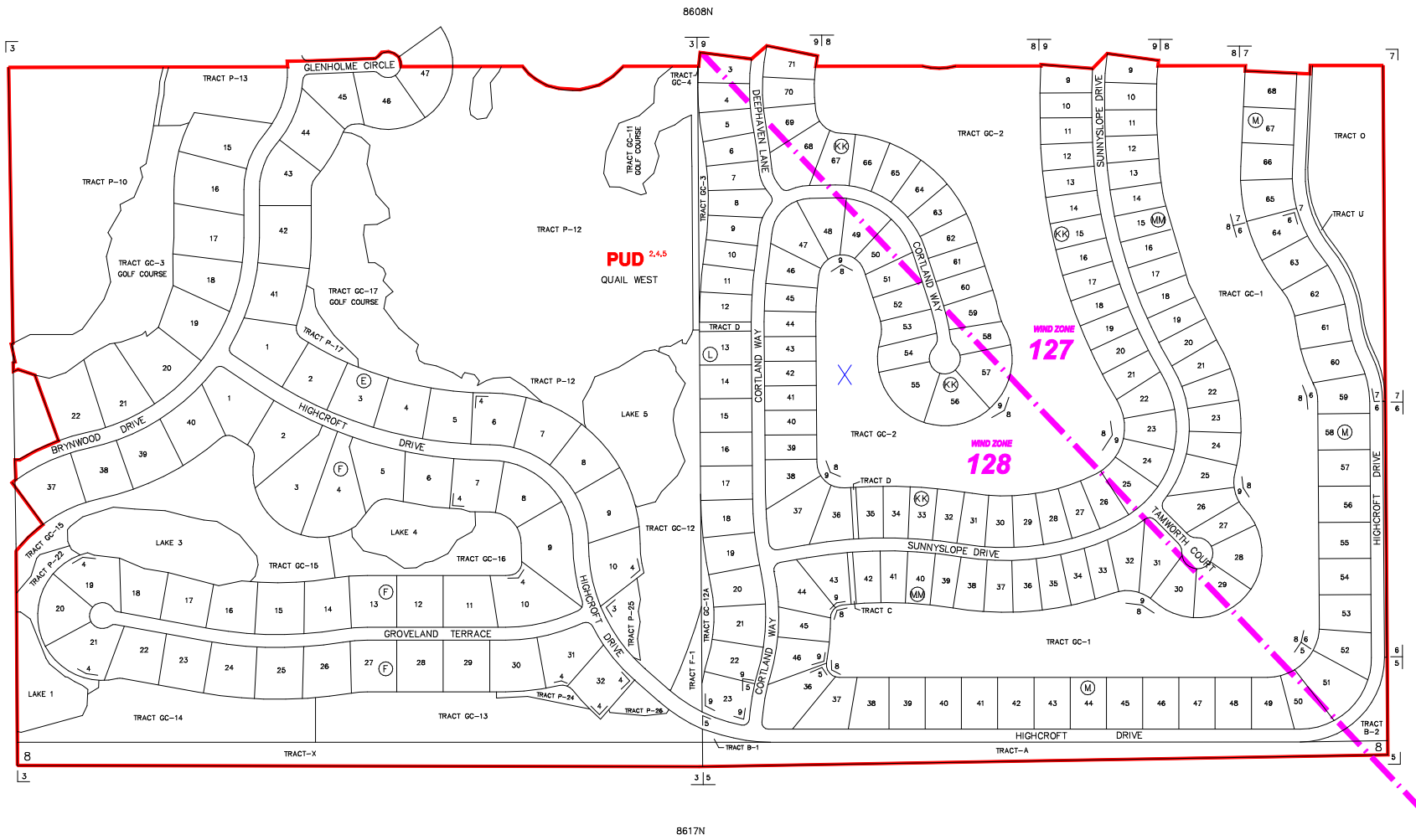


The Historic/Archaeological Probability Maps are the official County source designating historic or archaeological resources.

LAST REVISION: ZONING _____ OTHER _____



--- INDICATES WIND ZONE BOUNDARY LINE

SUBDIVISION INDEX							
NO.	NAME	P.B.	Pg.	NO.	NAME	P.B.	Pg.
1	QUAIL WEST UNIT ONE, REPLAT	21	84-106	11			
2	QUAIL WEST UNIT ONE, REPLAT BLOCKS E & F 1ST ADD.	22	34-35	12			
3	QUAIL WEST PHASE III, UNIT ONE	30	81-83	13			
4	QUAIL WEST PHASE III, UNIT TWO	34	63-65	14			
5	QUAIL WEST PHASE III, UNIT THREE	37	41-45	15			
6	QUAIL WEST PHASE III, UNIT FIVE	39	34-47	16			
7	QUAIL WEST PHASE III, UNIT SEVEN	46	89-102	17			
8				18			
9				19			
10				20			

ZONING NOTES
 1 6-15-90 11-89-3 90-56
 2 DC-91
 3 7-27-98 (PUB-88-37) 94-44
 4 7-27-98 (PUB-88-37) 94-44
 5 7-27-98 (PUB-88-37) 94-44

THIS IS TO CERTIFY THAT THIS IS A PAGE OF THE OFFICIAL ZONING ATLAS REFERRED TO AND ADOPTED BY REFERENCE BY ORDINANCE NO. 04-41 OF THE COUNTY OF COLLIER, FLORIDA, ADOPTED JUNE 22, 2004.

BY _____ CHAIRMAN

ATTEST _____ CLERK

FLOOD INSURANCE RATE MAP INFORMATION

COMMUNITY NUMBER: 120067 PANEL NUMBER: 2156

PROGRAM: REGULAR EFFECTIVE DATE: NOV. 17, 2005

FLOOD ZONE: ALL_X_OR AS SHOWN ON MAP.

WIND ZONE: ALL _____ OR AS SHOWN ON MAP.

COLLIER COUNTY, FLORIDA

COMMUNITY DEVELOPMENT DIVISION

TWP 48S RING 26E SEC(S) 08 SO 1/2

SCALE 0 400

MAP NUMBER: 8608S