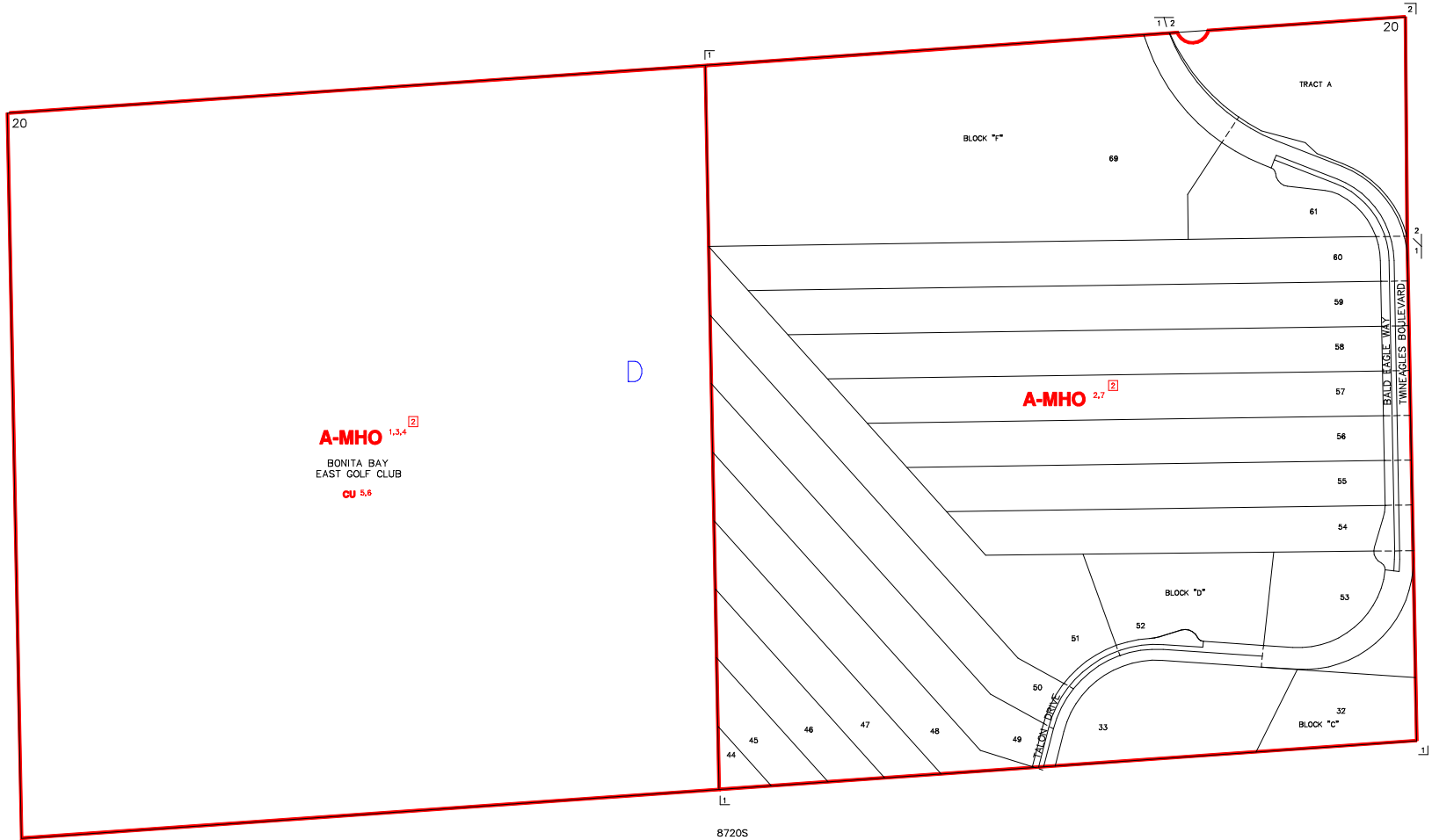


482728

482728



SUBDIVISION INDEX							
NO.	NAME	P.B.	Pg.	NO.	NAME	P.B.	Pg.
1	TWINEAGLES, PHASE ONE	30	78-85	11			
2	TWINEAGLES, PHASE TWO	44	41-70	12			
3				13			
4				14			
5				15			
6				16			
7				17			
8				18			
9				19			
10				20			

ZONING NOTES

1 4-26-82 R-82-2(1) 82-32
 2 4-26-82 R-82-2(2) 82-32
 3 1-20-87 PDP-97-3 97-29
 4 1-20-87 PDP-97-3 97-29
 5 1-20-87 PDP-97-3 97-29
 6 1-20-87 PDP-97-3 97-29
 7 1-20-87 PDP-97-3 97-29
 8 1-20-87 PDP-97-3 97-29
 9 1-20-87 PDP-97-3 97-29
 10 1-20-87 PDP-97-3 97-29

ZONING OVERLAY NOTES

OVERLAYS CREATED BY
 LDC ORD. No. 04-08 1-7-04
 [2] PERMITS-RECEIVING LANDS

THIS IS TO CERTIFY THAT THIS IS A PAGE OF THE OFFICIAL ZONING ATLAS REFERRED TO AND ADOPTED BY REFERENCE BY ORDINANCE NO. 04-41 OF THE COUNTY OF COLLIER, FLORIDA, ADOPTED JUNE 22, 2004.

BY _____ CHAIRMAN
 ATTEST _____ CLERK

FLOOD INSURANCE RATE MAP INFORMATION

COMMUNITY NUMBER: 120067 PANEL NUMBER: 225G
 PROGRAM: REGULAR EFFECTIVE DATE: NOV. 17, 2005
 FLOOD ZONE: ALL, D, OR AS SHOWN ON MAP.
 WIND ZONE: ALL, 126, OR AS SHOWN ON MAP.

COLLIER COUNTY, FLORIDA
 COMMUNITY DEVELOPMENT DIVISION
 TWP 48S RNG 27E SEC(S) 20 NO 1/2
 SCALE 0 400
 MAP NUMBER: 8720N