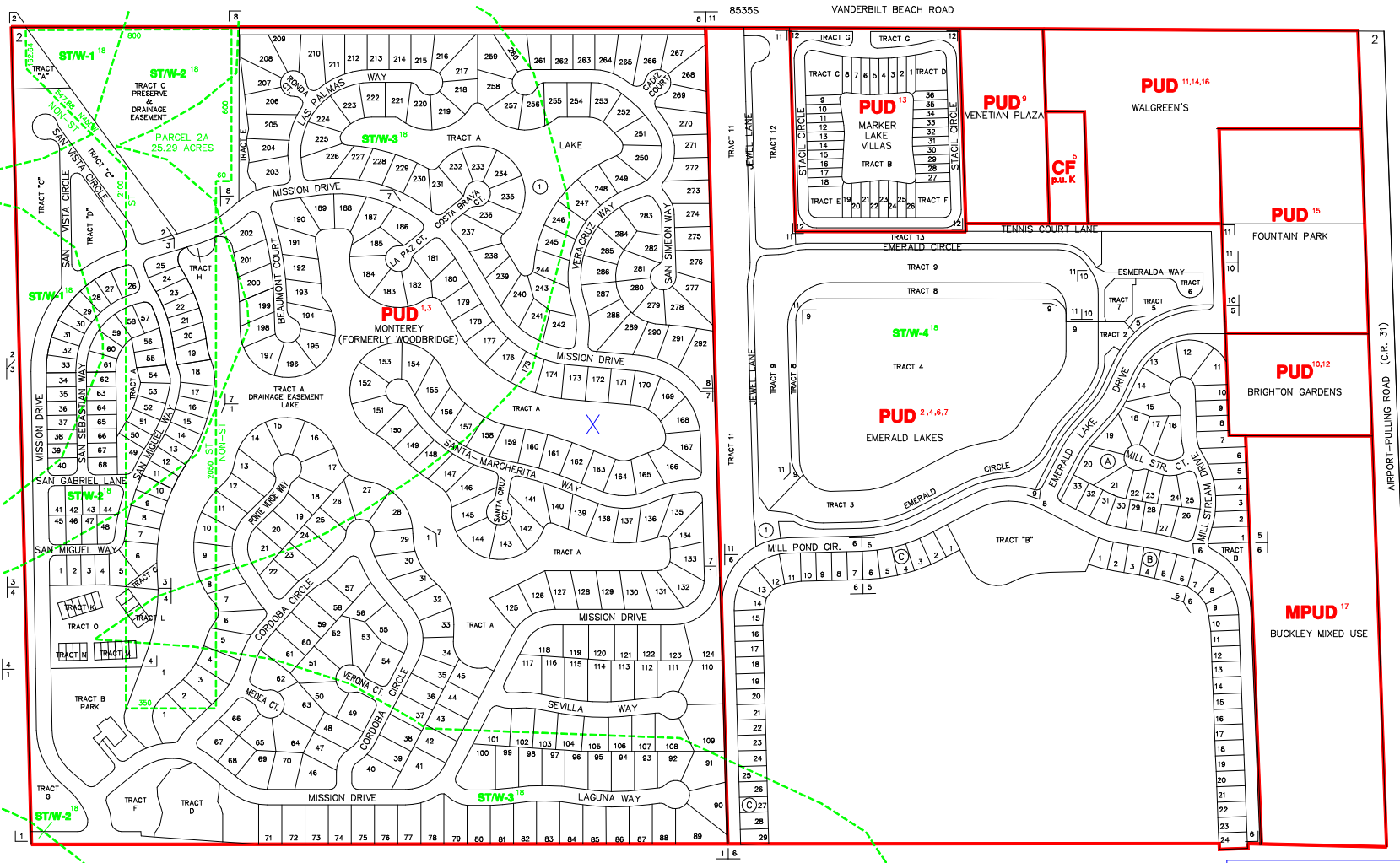


The Historic/Archaeological Probability Maps are the official County source designating historic or archeologic resources.

LAST REVISION: ZONING _____ OTHER _____



-----INDICATES SPECIAL TREATMENT OVERLAY

SUBDIVISION INDEX							
NO.	NAME	P.B.	Pg.	NO.	NAME	P.B.	Pg.
1	VILLAGES OF MONTEREY AT WOODBRIDGE, UNIT ONE	15	11-14	11	EMERALD LAKES AT BRIDGET LAKE, UNIT 5	18	91-94
2	VILLAGES OF MONTEREY AT WOODBRIDGE, UNIT SIX	23	21-22	12	MARKER LAKE VILLAGES	30	46-47
3	MONTEREY UNIT THREE	19	8-11	13			
4	VILLAGES OF MONTEREY AT WOODBRIDGE, UNIT TWO	19	69-70	14			
5	EMERALD LAKES AT BRIDGET LAKES, UNIT TWO	15	45-46	15			
6	EMERALD LAKES AT BRIDGET LAKES, UNIT 2	16	42-46	16			
7	VILLAGES OF MONTEREY AT WOODBRIDGE, UNIT 4	17	77-79	17			
8	VILLAGES OF MONTEREY AT WOODBRIDGE, UNIT 5	17	104-106	18			
9	EMERALD LAKES AT BRIDGET LAKE, UNIT 3	18	54-55	19			
10	EMERALD LAKES AT BRIDGET LAKE, UNIT 4	18	68-70	20			

ZONING NOTES
 1 12-23-86 1-86-17C
 2 7-20-81 PUD-88-17(3) 91-96
 3 6-24-91 PUD-88-17(1) 91-92
 4 10-22-91 PUD-88-17(2) 91-98
 5 5-11-89 PUD-89-2 99-30
 6 9-23-89 PUD-89-2 99-30
 7 10-8-86 PUD-86-9 86-60
 8 10-13-86 PUD-86-5 86-84
 9 8-23-89 PUD-89-17 89-53
 10 1-23-05 PUD-04-16-05-20 05-05
 11 6-15-05 LDC 06(1) 05-27

THIS IS TO CERTIFY THAT THIS IS A PAGE OF THE OFFICIAL ZONING ATLAS REFERRED TO AND ADOPTED BY REFERENCE BY ORDINANCE NO. 04-41 OF THE COUNTY OF COLLIER, FLORIDA, ADOPTED JUNE 22, 2004.

BY _____ CHAIRMAN
 ATTEST _____ CLERK

FLOOD INSURANCE RATE MAP INFORMATION
 COMMUNITY NUMBER: 120067 PANEL NUMBER: 381G,385G
 PROGRAM: REGULAR EFFECTIVE DATE: NOV. 17, 2005
 FLOOD ZONE: ALL X OR AS SHOWN ON MAP.
 WIND ZONE: ALL 130 OR AS SHOWN ON MAP.

COLLIER COUNTY, FLORIDA
 COMMUNITY DEVELOPMENT DIVISION
 TWP 49S RNG 25E SEC(S) 02 NO 1/2
 SCALE MAP NUMBER: 9502N