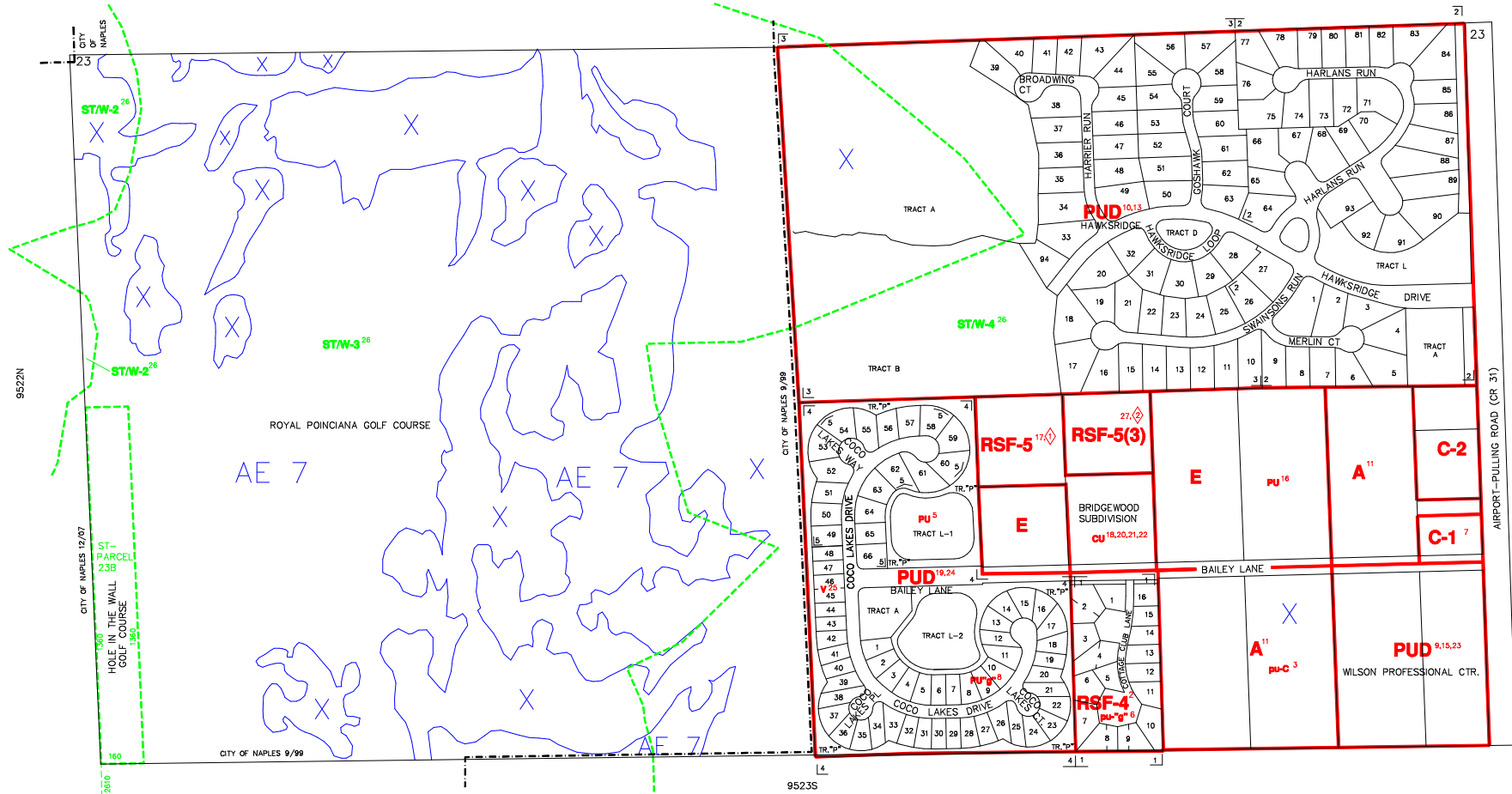


The Historic/Archaeological Probability Maps are the official County source designating historic or archaeological resources.

LAST REVISION: ZONING _____ OTHER _____

9514S



----- INDICATES SPECIAL TREATMENT OVERLAY
 - - - - - INDICATES CITY LIMITS

SUBDIVISION INDEX							
NO.	NAME	P.B.	Pg.	NO.	NAME	P.B.	Pg.
1	THE COTTAGES	14	59	11			
2	HAWKS RIDGE UNIT ONE	18	67	12			
3	HAWKS RIDGE UNIT TWO	24	77-81	13			
4	COCO LAKES	33	77-89	14			
5	COCO LAKES ESTATE HOMES	43	87-88	15			
				16			
				17			
				18			
				19			
				20			

ZONING NOTES	
1	R-99-0C 12-10-85
2	R-95-10C 4-13-83
3	PU-82-10C 4-13-83
4	PU-88-23C (EXP.)
5	R-85-80 PU-85-16C 85-281
6	PU-88-10C (EXP/ED)
7	R-87-14C
8	CU-91-09 R-89-13 89-14
9	CU-91-09 R-89-13 89-14
10	CU-91-09 R-89-13 89-14
11	R-85-80 PU-85-16C 85-281
12	R-85-80 PU-85-16C 85-281
13	R-85-80 PU-85-16C 85-281
14	R-85-80 PU-85-16C 85-281
15	R-85-80 PU-85-16C 85-281
16	R-85-80 PU-85-16C 85-281
17	R-85-80 PU-85-16C 85-281
18	R-85-80 PU-85-16C 85-281
19	R-85-80 PU-85-16C 85-281
20	R-85-80 PU-85-16C 85-281
21	R-85-80 PU-85-16C 85-281
22	R-85-80 PU-85-16C 85-281
23	R-85-80 PU-85-16C 85-281
24	R-85-80 PU-85-16C 85-281
25	R-85-80 PU-85-16C 85-281
26	R-85-80 PU-85-16C 85-281
27	R-85-80 PU-85-16C 85-281

DEVELOPMENT STANDARDS MODIFICATIONS	
1-24-05	R-94-0 95-2
1-24-06	R2-05-AR-7925 06-02

THIS IS TO CERTIFY THAT THIS IS A PAGE OF THE OFFICIAL ZONING ATLAS REFERRED TO AND ADOPTED BY REFERENCE BY ORDINANCE NO. 04-41 OF THE COUNTY OF COLLIER, FLORIDA, ADOPTED JUNE 22, 2004.

BY _____ CHAIRMAN
 ATTEST _____ CLERK

FLOOD INSURANCE RATE MAP INFORMATION

COMMUNITY NUMBER: 120067 PANEL NO. 383G,385G,391G
 PROGRAM: REGULAR EFFECTIVE DATE: NOV. 17, 2005
 FLOOD ZONE: ALL _____ OR AS SHOWN ON MAP.
 WIND ZONE: ALL 131 _____ OR AS SHOWN ON MAP.

COLLIER COUNTY, FLORIDA

COMMUNITY DEVELOPMENT DIVISION

TWP 49S RNG 25E SEC(S) 23 NO 1/2

SCALE
 0 400
 MAP NUMBER:
 9523N