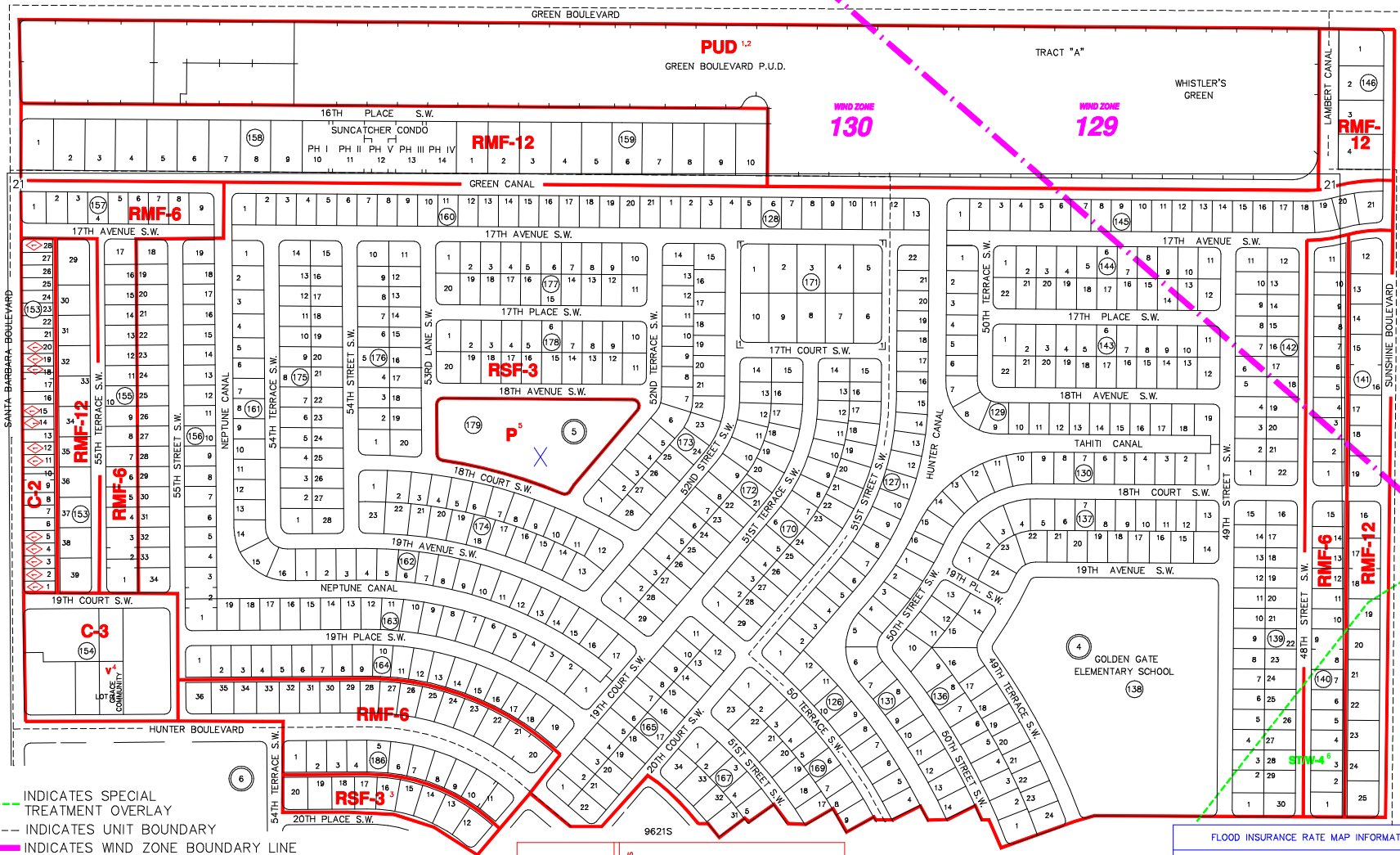


The Historic/Archaeological Probability Maps are the official County source designating historic or archaeological resources.

LAST REVISION: ZONING _____ OTHER _____

GGE26



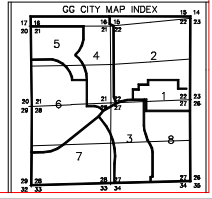
INDICATES SPECIAL TREATMENT OVERLAY
 - - - - - INDICATES UNIT BOUNDARY
 - - - - - INDICATES WIND ZONE BOUNDARY LINE

GOLDEN GATE CITY UNITS	
UNIT	P.B. Pg.
UNIT 1	5/60, 9/100, 11/11
UNIT 2	5/65, 9/116, 7/66, 7/69
UNIT 3	5/97, 11/9
UNIT 4	5/107, 9/121
UNIT 5	5/117
UNIT 6	5/124, 9/1
UNIT 7	5/135
UNIT 8	5/147, 9/107A

SUBDIVISION INDEX			
NO.	NAME	P.B.	Pg.
1	GOLDEN ACRES	33	23-24
2			
3			
4			
5			
6			
7			
8			
9			
10			

ZONING NOTES
 1 11-5-83 R-93-6, R-93-5C
 2 11-5-83 R-93-6, R-93-5C
 3 CORRECTION 10-22-02 313
 4 2-23-00 LDC 00-02
 5 4-12-00 LDC 00-02
 6 4-12-00 LDC 00-02

DEVELOPMENT STANDARDS INDICATIONS
 10-12-93 R-93-9 93-73



THIS IS TO CERTIFY THAT THIS IS A PAGE OF THE OFFICIAL ZONING ATLAS REFERRED TO AND ADOPTED BY REFERENCE BY ORDINANCE NO. 04-41 OF THE COUNTY OF COLLIER, FLORIDA, ADOPTED JUNE 22, 2004.

BY _____ CHAIRMAN
 ATTEST _____ CLERK

FLOOD INSURANCE RATE MAP INFORMATION	
COMMUNITY NUMBER: 120067	PANEL NUMBER: 4156,425G
PROGRAM: REGULAR EFFECTIVE DATE: NOV. 17, 2005	
FLOOD ZONE: ALL, X OR AS SHOWN ON MAP.	
WIND ZONE: ALL OR AS SHOWN ON MAP.	

COLLIER COUNTY, FLORIDA
 COMMUNITY DEVELOPMENT DIVISION
 TWP 49S RNG 26E SEC(5) 21 N 1/2
 SCALE 0 400
 MAP NUMBER: 9621N

GGE02

9622N