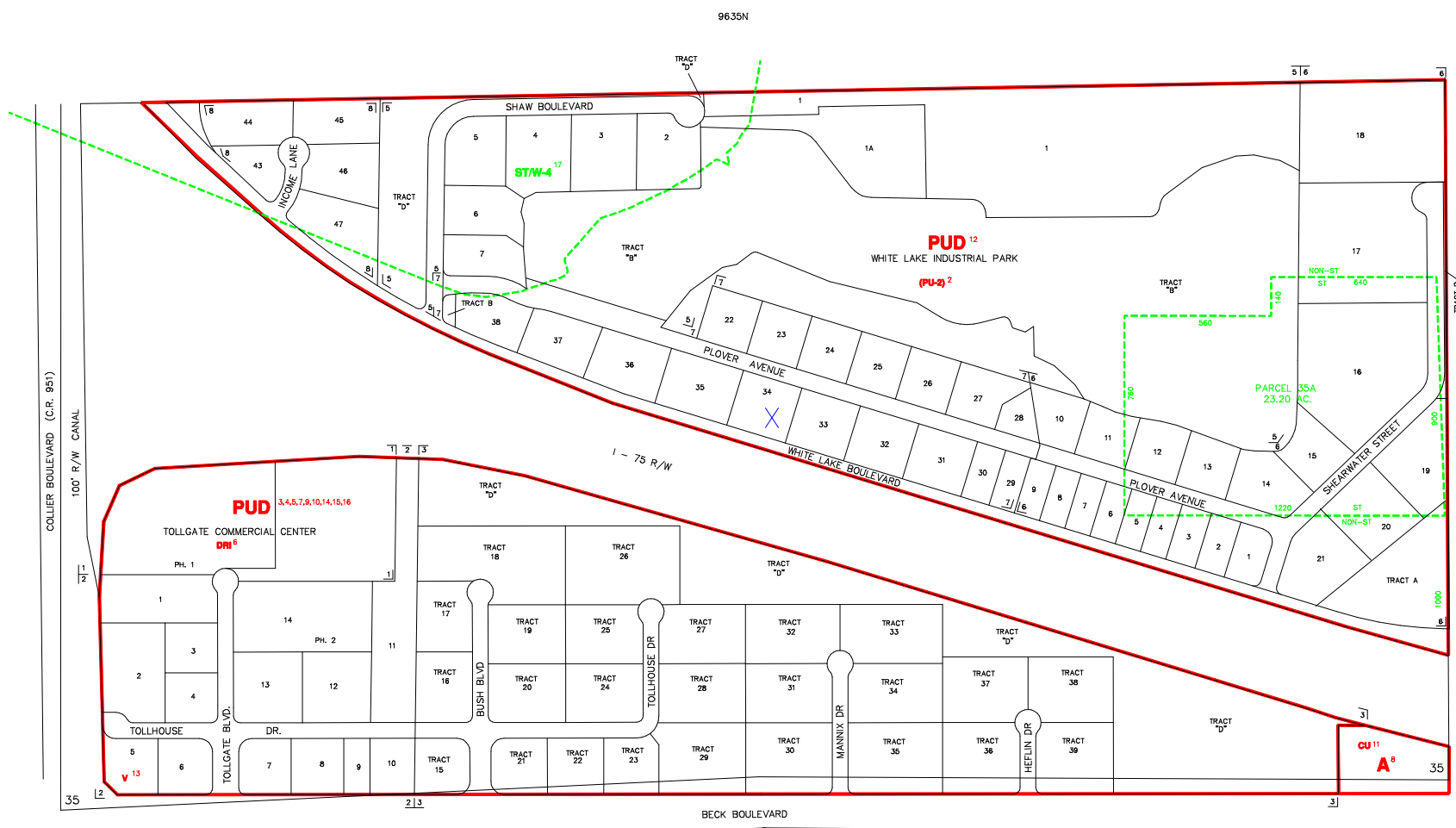


The Historic/Archaeological Probability Maps are the official County source designating historic or archaeological resources.

LAST REVISION: ZONING \_\_\_\_\_ OTHER \_\_\_\_\_



----- INDICATES SPECIAL TREATMENT OVERLAY

SUBDIVISION INDEX							
NO.	NAME	P.B.	Pg.	NO.	NAME	P.B.	Pg.
1	TOLLGATE COMMERCIAL CENTER PHASE 1	16	1	11			
2	TOLLGATE COMMERCIAL CENTER PHASE 2	18	23-24	12			
3	TOLLGATE COMMERCIAL CENTER PHASE 3	23	95-100	13			
4				14			
5	WHITE LAKE CORPORATE PARK PHASE ONE	31	26-28	15			
6	WHITE LAKE CORPORATE PARK PHASE TWO	34	45-46	16			
7	WHITE LAKE CORPORATE PARK PHASE THREE	40	12-14	17			
8	WHITE LAKE CORPORATE PARK PHASE FOUR	42	42-43	18			
9				19			
10				20			

**ZONING NOTES**

1 PUD-81-20-C  
 2 PUD-81-20-C  
 3 PUD-81-20-C  
 4 PUD-81-20-C  
 5 PUD-81-20-C  
 6 PUD-81-20-C  
 7 PUD-81-20-C  
 8 PUD-81-20-C  
 9 PUD-81-20-C  
 10 PUD-81-20-C  
 11 PUD-81-20-C  
 12 PUD-81-20-C  
 13 PUD-81-20-C  
 14 PUD-81-20-C  
 15 PUD-81-20-C  
 16 PUD-81-20-C  
 17 PUD-81-20-C

THIS IS TO CERTIFY THAT THIS IS A PAGE OF THE OFFICIAL ZONING ATLAS REFERRED TO AND ADOPTED BY REFERENCE BY ORDINANCE NO. 04-41 OF THE COUNTY OF COLLIER, FLORIDA, ADOPTED JUNE 22, 2004.

BY \_\_\_\_\_ CHAIRMAN  
 ATTEST \_\_\_\_\_ CLERK

FLOOD INSURANCE RATE MAP INFORMATION	
COMMUNITY NUMBER: 120067	PANEL NUMBER: 425G
PROGRAM: REGULAR	EFFECTIVE DATE: NOV. 17, 2005
FLOOD ZONE: ALL X OR AS SHOWN ON MAP.	
WIND ZONE: ALL 130 OR AS SHOWN ON MAP.	
COLLIER COUNTY, FLORIDA	
COMMUNITY DEVELOPMENT DIVISION	
TWP 49S RING 26E SEC(S) 35 SO 1/2	
SCALE	MAP NUMBER: 9635S