

9622S

9627N

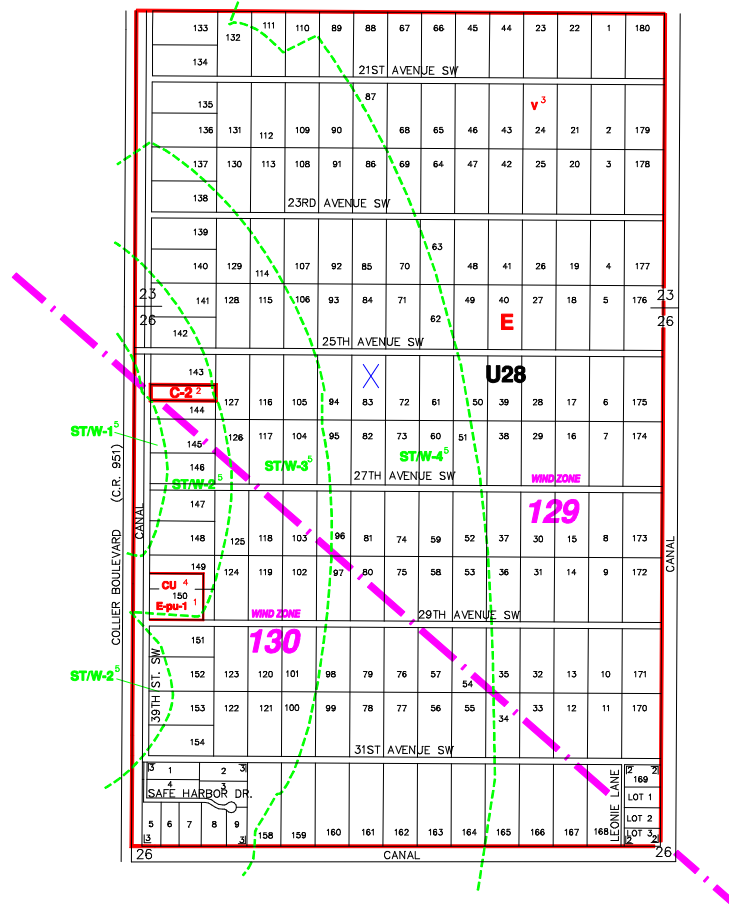
9627S

GGE27

9624S

9625N

9625S



UNIT 28

----- INDICATES SPECIAL TREATMENT OVERLAY
 - - - - - INDICATES WIND ZONE BOUNDARY LINE

9635N

SUBDIVISION INDEX			
NO.	NAME	P.B.	Pg.
1	GOLDEN GATE ESTATES UNIT 28	7	19,20
	LEONE'S SUBDIVISION	19	36
	SAFE HARBOR	26	22

NO.	NAME	P.B.	Pg.
11			
12			
13			
14			
15			
16			
17			
18			
19			
20			

ZONING NOTES
 1-1-01 PU-8-BC
 2-2-02 V-8-19 97-134
 3-3-03 V-8-19 97-134
 4-4-04 V-8-19 97-134
 5-5-05 V-8-19 97-134
 6-6-06 V-8-19 97-134
 7-7-07 V-8-19 97-134
 8-8-08 V-8-19 97-134
 9-9-09 V-8-19 97-134
 10-10-10 V-8-19 97-134

THIS IS TO CERTIFY THAT THIS IS A PAGE OF THE OFFICIAL ZONING ATLAS REFERRED TO AND ADOPTED BY REFERENCE BY ORDINANCE NO. 04-41 OF THE COUNTY OF COLLIER, FLORIDA, ADOPTED JUNE 22, 2004.

BY _____ CHAIRMAN

ATTEST _____ CLERK

FLOOD INSURANCE RATE MAP INFORMATION	
COMMUNITY NUMBER: 120067 PANEL NUMBER: 4250	
PROGRAM: REGULAR	EFFECTIVE DATE: NOV. 17, 2005
FLOOD ZONE: ALL, X, OR AS SHOWN ON MAP.	
WIND ZONE: ALL, OR AS SHOWN ON MAP.	
COLLIER COUNTY, FLORIDA	
COMMUNITY DEVELOPMENT DIVISION	
TWP 49S RNG 26E SEC(S) 23pt., 26	
SCALE 0 1200	MAP NUMBER: GGE28